

CERTIFIED LAND CORNER RECORDATION

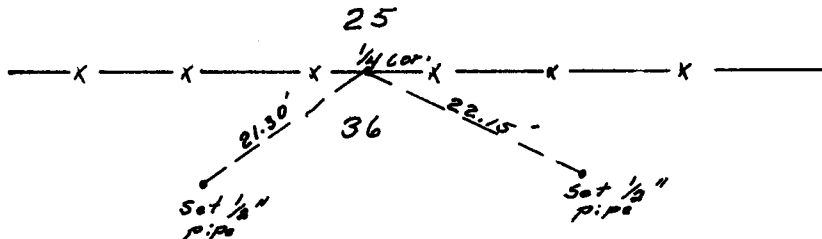
DESCRIPTION OF CORNER EVIDENCE FOUND, AND ORIGINAL RECORD (if known)

LOCATION
 S.25 Found granite stone 5" x 9" x 12"
 1/4
 S. 36 G.L.O. record - unknown.
 T.14N., R.63W.
 6th P.M.

DESCRIPTION OF MONUMENT AND ACCESSORIES ESTABLISHED
 TO PERPETUATE THE ORIGINAL LOCATION OF THIS CORNER:

At the corner: Cheisled "x" on top of stone.
 Accessories: Set 5 1/2' steel post 1 ft. west of stone.
 See sketch for witness corners set.

SKETCH, WITH COURSE AND DISTANCE TO ADJACENT CORNER IF DETERMINED IN THIS SURVEY.
 (May Sketch or Paste Reproduction on Reverse Side.)



I, Robert C. Corbet certify that I have carefully performed or reviewed the work done on the diagrammed corner as reported on this recordation form and approve the same.

Robert C. Corbet L. S. No. 495
 Signature of Surveyor Registration No.

STATE OF WYOMING,
 Office of Clerk and Recorder,
 County of _____

This "corner record" was filed for record on the 9 day of August, 1973, was noted on the cross-index plat and is assigned page No. _____, in book No. _____.

John B. Huismann
 County Official

Cross Index No. <u>V 23</u>	T. <u>14</u>	R. <u>63</u>	<u>6</u> Mer.
_____	T. _____	R. _____	Mer.
_____	T. _____	R. _____	Mer.
_____	T. _____	R. _____	Mer.
_____	T. _____	R. _____	Mer.
_____	T. _____	R. _____	Mer.
_____	T. _____	R. _____	Mer.

Photographed

Indexed

Posted

Assessor

The State of Wyoming }
 County of Laramie } SS

This instrument was filed for record
 at 1:14 o'clock P M. on the
9 day of August
 A. D. 19 23 and duly recorded in
 Book _____ on page _____

[Handwritten Signature]

_____, Ex-Officio Register of Deeds,
 _____, Deput